

GENERAL NOTES

1. TOPOGRAPHIC INFORMATION IS BASED UPON FIELD SURVEY CONDUCTED BY: SLR CONSULTING, "TOPOGRAPHIC SURVEY" AT A SCALE OF 1"=20'. DATED APRIL 19, 2022. NORTH ARROW, BEARINGS, AND COORDINATES ARE BASED UPON THE CONNECTICUT STATE PLANE SYSTEM (NAD 1983). BOUNDARY INFORMATION BASED OFF TOWN PROVIDED GIS MAPPING.
2. INFORMATION REGARDING THE LOCATION OF EXISTING UTILITIES HAS BEEN BASED UPON AVAILABLE INFORMATION AND MAY BE INCOMPLETE, AND WHERE SHOWN SHOULD BE CONSIDERED APPROXIMATE. THE LOCATION OF ALL EXISTING UTILITIES SHOULD BE CONFIRMED PRIOR TO BEGINNING CONSTRUCTION. CALL "CALL BEFORE YOU DIG", 1-800-922-4455. ALL UTILITY LOCATIONS THAT DO NOT MATCH THE VERTICAL OR HORIZONTAL CONTROL SHOWN ON THE PLANS SHALL IMMEDIATELY BE BROUGHT TO THE ATTENTION OF THE ENGINEER FOR RESOLUTION.
3. SLR CONSULTING ACCEPTS NO RESPONSIBILITY FOR THE ACCURACY OF MAPS AND DATA WHICH HAVE BEEN SUPPLIED BY OTHERS.
4. THE EXACT LOCATION AND SIZE OF ELECTRIC, TELEPHONE AND CABLE TELEVISION ARE TO BE DETERMINED BY THE RESPECTIVE UTILITY COMPANIES.
5. ALL DIMENSIONS AND ELEVATIONS SHALL BE VERIFIED IN THE FIELD PRIOR TO CONSTRUCTION. ANY DISCREPANCIES SHALL BE BROUGHT TO THE ATTENTION OF THE ENGINEER.
6. SEDIMENT AND EROSION CONTROL MEASURES AS DEPICTED ON THESE PLANS AND DESCRIBED WITHIN THE SEDIMENT AND EROSION CONTROL NARRATIVE SHALL BE IMPLEMENTED AND MAINTAINED UNTIL PERMANENT COVER AND STABILIZATION IS ESTABLISHED. ALL SEDIMENT AND EROSION CONTROL MEASURES SHALL CONFORM TO THE "GUIDELINES FOR SOIL EROSION AND SEDIMENT CONTROL, CONNECTICUT - 2002, AND IN ALL CASES BEST MANAGEMENT PRACTICES SHALL PREVAIL.
7. ALL DISTURBED AREAS SHALL RECEIVE A MINIMUM OF 6" TOPSOIL AND BE SEEDED WITH GROUND COVER SEED MIX, AS SHOWN ON THE PLANS. ALL VEGETATIVE ESTABLISHMENT SHALL CONFORM TO THE "STANDARDS FOR ORGANIC LAND CARE, NORA CONNECTICUT 2011", AND IN ALL CASES BEST MANAGEMENT PRACTICES SHALL PREVAIL.
8. IN ALL CASES, TOPSOIL AND OTHER CONSTRUCTION MATERIALS SHALL BE DRAWN FROM THE ON-SITE STOCKPILES OF EXISTING MATERIAL. ONLY WHEN ON-SITE STOCKPILES HAVE BEEN USED SHALL MATERIAL BE IMPORTED TO THE SITE.
9. ALL PROPOSED CONTOURS AND SPOT ELEVATIONS INDICATE FINISHED GRADE.
10. ALL CONSTRUCTION MATERIALS AND METHODS SHALL CONFORM TO THE TOWN OF CHESHIRE REQUIREMENTS AND TO THE APPLICABLE SECTIONS OF THE STATE OF CONNECTICUT DEPARTMENT OF TRANSPORTATION STANDARD SPECIFICATIONS FOR ROADS, BRIDGES, FACILITIES AND INCIDENTAL CONSTRUCTION, FORM 818 AND ADDENDUMS
11. THE PLANS REQUIRE A CONTRACTOR'S WORKING KNOWLEDGE OF LOCAL, MUNICIPAL, WATER AUTHORITY, AND STATE CODES FOR UTILITY SYSTEMS. ANY CONFLICTS BETWEEN MATERIALS AND LOCATIONS SHOWN, AND LOCAL REQUIREMENTS SHALL BE BROUGHT TO THE ATTENTION OF THE ENGINEER PRIOR TO THE EXECUTION OF WORK. THE ENGINEER WILL NOT BE HELD LIABLE FOR COSTS INCURRED TO IMPLEMENT OR CORRECT WORK WHICH DOES NOT CONFORM TO LOCAL CODE.
12. COMPLIANCE WITH THE PERMIT CONDITIONS IS THE RESPONSIBILITY OF BOTH THE CONTRACTOR AND THE PERMITTEE.
13. THE PROPERTY OWNER MUST MAINTAIN (REPAIR/REPLACE WHEN NECESSARY) THE SILTATION CONTROL UNTIL ALL DEVELOPMENT ACTIVITY IS COMPLETED AND ALL DISTURBED AREAS ARE PERMANENTLY STABILIZED.
14. A SUPPLY OF ABSORBENT SPILL RESPONSE MATERIAL SHOULD BE KEPT ON-SITE TO CLEAN UP ANY SPILLS OF HAZARDOUS MATERIALS.

CONSTRUCTION SEQUENCE

1. PRIOR TO COMMENCEMENT OF WORK A PRECONSTRUCTION MEETING SHALL BE HELD WITH TOWN STAFF AND REPRESENTATIVES OF THE CONTRACTOR AND OWNER. AT THIS MEETING, ONE PERSON WILL BE PLACED IN CHARGE OF SEDIMENT AND EROSION CONTROL FOR THE ENTIRE SITE.
2. CONTRACTOR TO STAKE OUT LIMIT OF DISTURBANCE AND VEGETATION TO BE RETAINED. NO DISTURBANCE IS TO TAKE PLACE BEYOND THE LIMITS OF WORK SHOWN.
3. CONTRACTOR TO INSTALL SEDIMENT AND EROSION CONTROLS ALONG STORM DRAIN INLETS AND STABILIZED CONSTRUCTION ENTRANCES.
4. REMOVE EXISTING SIDEWALKS, PARKING LOTS AND DRIVEWAYS WHERE NOTED ON THE PLANS.
5. INITIATE MASS EARTHWORK OPERATIONS AFTER ALL BASINS, BERMS, SWALES, SILT FENCE & HAYBALES ARE INSTALLED
6. INSTALL UTILITIES AND PARKING LOTS/DRIVEWAYS WHERE NOTED ON THE PLANS.
7. SLOPES ARE TO BE ESTABLISHED AS SOON AS PRACTICAL BEFORE UTILITY INSTALLATION. STABILIZE ALL SLOPES IMMEDIATELY AFTER THEIR ESTABLISHMENT.

GENERAL CONSTRUCTION NOTES

1. SEDIMENT AND EROSION CONTROLS SHALL BE INSPECTED AT LEAST ONCE A WEEK AND WITHIN 24 HOURS OF THE END OF A STORM WITH A RAINFALL AMOUNT OF 0.5 INCH OR GREATER.
2. INSPECTION OF THE SITE FOR EROSION SHALL CONTINUE FOR A PERSON OF THREE MONTHS AFTER COMPETITION WHEN RAINFALLS OF ONE INCH OR MORE OCCUR.
3. THE SITE SHOULD BE KEPT CLEAN OF LOOSE DEBRIS, LITTER AND BUILDING MATERIALS SUCH THAT NONE OF THE ABOVE ENTER WATERS OR WETLANDS.
4. A COPY OF ALL PLANS AND REVISIONS, AND THE SEDIMENT AND EROSION CONTROL PLAN SHALL BE MAINTAINED ON-SITE AT ALL TIMES DURING CONSTRUCTION.

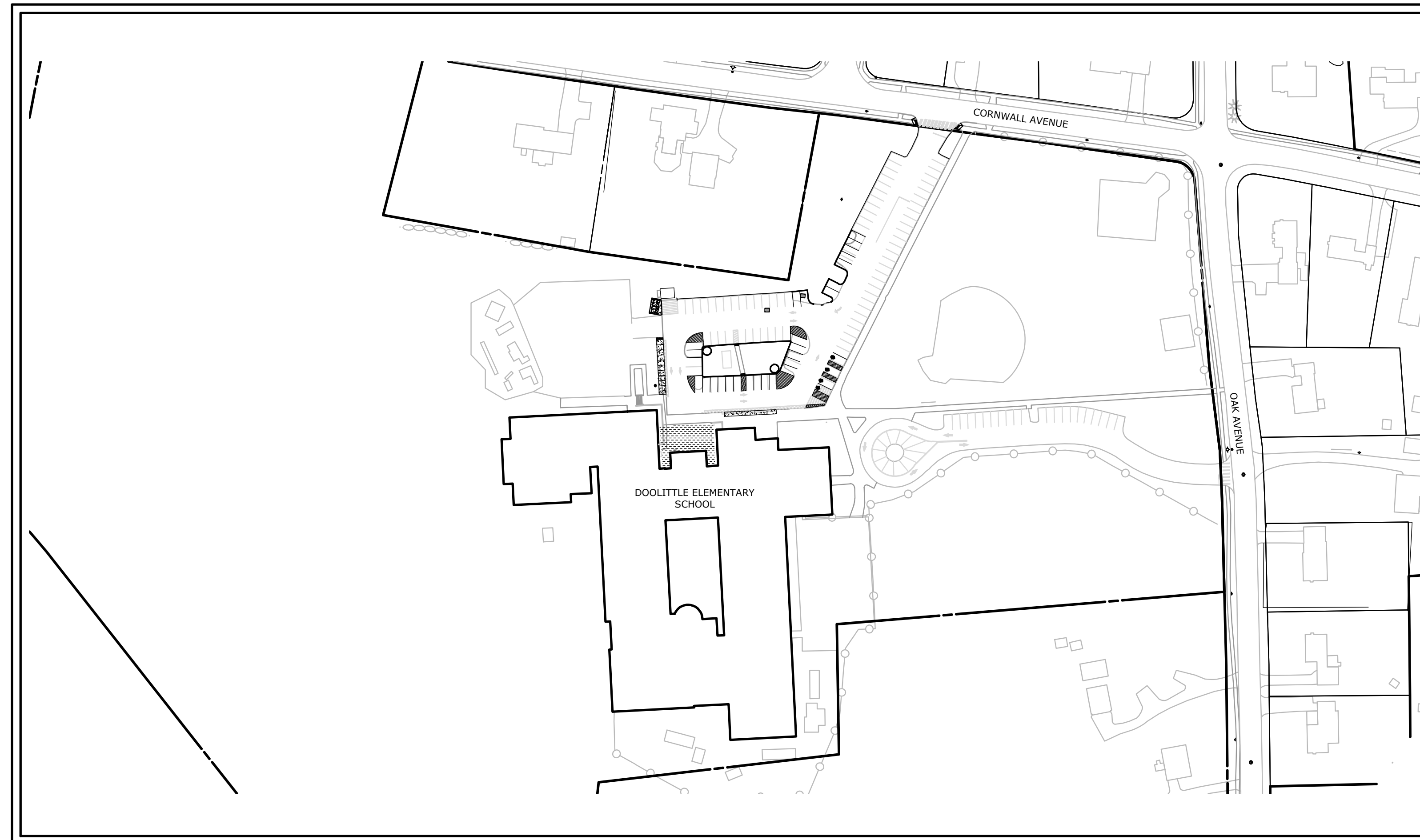
OPERATION AND MAINTENANCE PLAN (POST-CONSTRUCTION)

1. CATCH BASINS SHALL BE INSPECTED TWICE ANNUALLY AND AFTER ANY SPILLAGE OF OIL, GAS, OR OTHER CONTAMINANT SPILLS. SUBSEQUENT TO CONTAMINANT SPILLS, THE CATCH BASINS SHALL BE CLEANED IMMEDIATELY AND THE CONTENTS DISPOSED OF AT AN APPROVED OFF-SITE LOCATION.
2. THE PAVED AREAS SHALL BE SWEEPED TWICE ANNUALLY. TYPICALLY, SWEEPING SHOULD OCCUR IN THE SPRING, AFTER WINTER SANDING, AND IN THE FALL, AFTER ALL LEAVES HAVE FALLEN.
3. A VEGETATIVE OR IMPROVED COVER SHALL BE MAINTAINED ON ALL EARTH SURFACES TO MINIMIZE SOIL EROSION. USE OF FERTILIZER SHOULD BE MINIMIZED AND APPLIED USING PRUDENT APPLICATION PROCEDURES.
4. A LOG OF ALL INSPECTION AND CLEANING SHALL BE MAINTAINED BY THE OWNER AND BE AVAILABLE FOR INSPECTION.
5. DURING CONSTRUCTION AND FOR SIX MONTHS AFTER PROJECT COMPLETION INSPECTION OF SEDIMENT AND EROSION CONTROL MEASURES SHALL BE MADE ON A WEEKLY BASIS AND AFTER RAINFALL EVENTS OF 1" OR GREATER. A LOG OF SUCH INSPECTIONS SHALL BE MAINTAINED AT THE SITE.
6. THE MAINTENANCE OF THE DRIVEWAY AND STORM WATER SYSTEM WILL BE THE RESPONSIBILITY OF THE TOWN OF CHESHIRE.

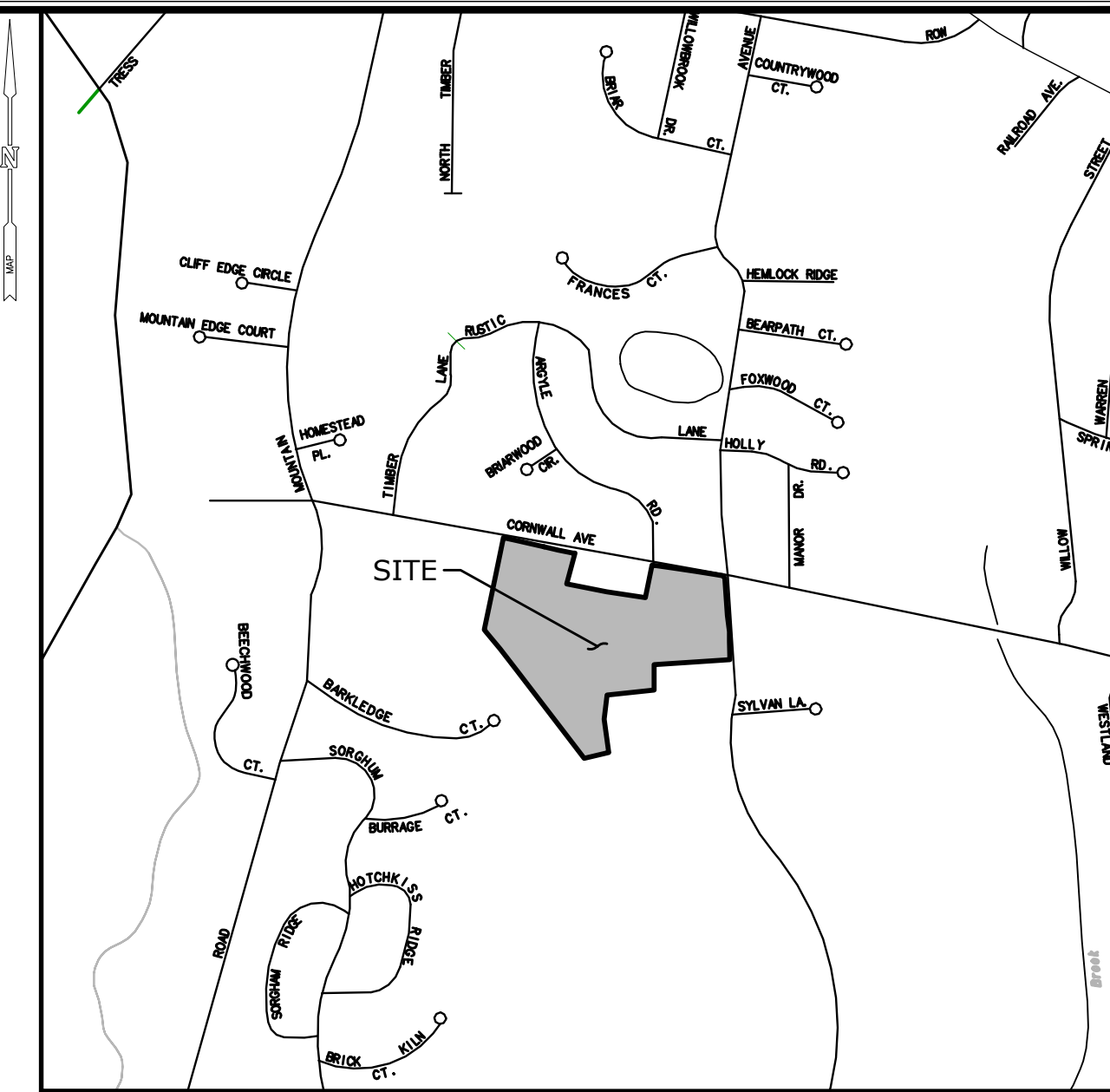
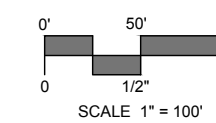
DOOLITTLE ELEMENTARY SCHOOL PARKING LOT REHABILITATION

735 CORNWALL AVENUE
CHESHIRE, CONNECTICUT

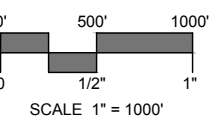
15410.00007
MAY 23, 2022



PROJECT SITE VICINITY MAP:



LOCATION MAP:



PREPARED FOR:
VINCENT MASCIANA
CHESHIRE PUBLIC SCHOOLS
29 MAIN STREET
CHESHIRE, CT 06410

PREPARED BY:



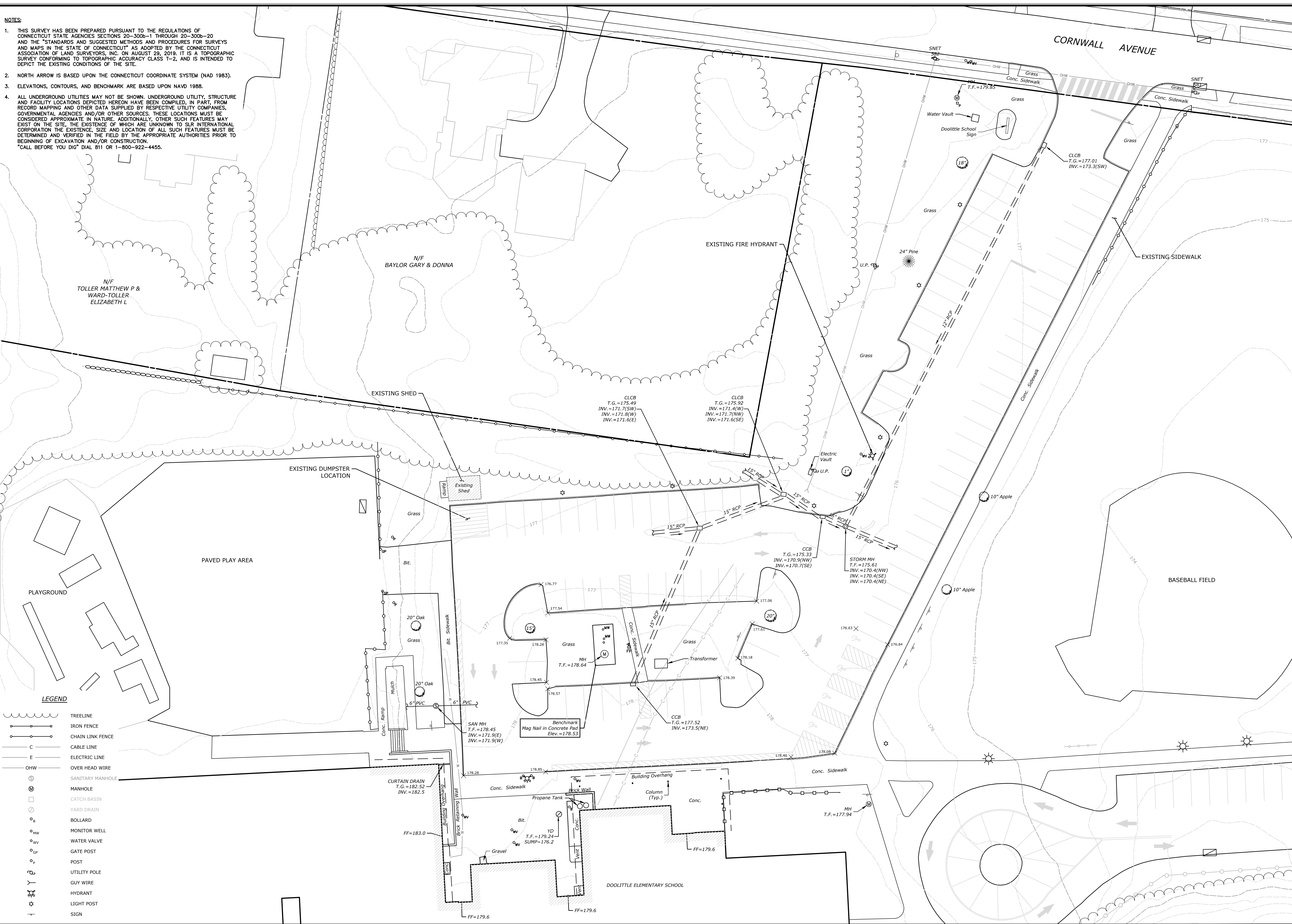
LIST OF DRAWINGS

NO.	NAME	TITLE
01	--	TITLE SHEET
02	EX	EXISTING CONDITIONS
03	SP	SITE PLAN
04	PM	PAVEMENT MARKINGS AND SIGNAGE PLAN
05	SD-1	SITE DETAILS
06	SD-2	SITE DETAILS
07	SD-3	SITE DETAILS (ADD ALTERNATE)

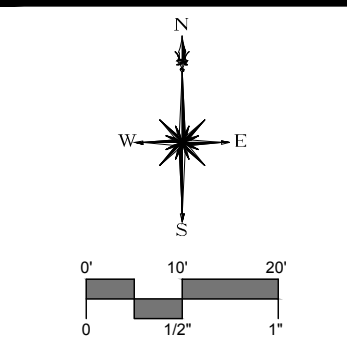


Know what's below.
Call before you dig.
www.cbyd.com

- NOTES:**
- THIS SURVEY HAS BEEN PREPARED PURSUANT TO THE REGULATIONS OF CONNECTICUT STATE AGENCIES SECTIONS 20-300b-1 THROUGH 20-300b-20 AND THE "STANDARDS AND SUGGESTED METHODS AND PROCEDURES FOR SURVEYS AND MAPS IN THE STATE OF CONNECTICUT" AS ADOPTED BY THE CONNECTICUT ASSOCIATION OF LAND SURVEYORS, INC. ON AUGUST 29, 2019. IT IS A TOPOGRAPHIC SURVEY CONFORMING TO TOPOGRAPHIC ACCURACY CLASS T-2, AND IS INTENDED TO DEPICT THE EXISTING CONDITIONS OF THE SITE.
 - NORTH ARROW IS BASED UPON THE CONNECTICUT COORDINATE SYSTEM (NAD 1983).
 - ELEVATIONS, CONTOURS, AND BENCHMARK ARE BASED UPON NAVD 1988.
 - ALL UNDERGROUND UTILITIES MAY NOT BE SHOWN. UNDERGROUND UTILITY, STRUCTURE AND FACILITY LOCATIONS DEPICTED HEREON HAVE BEEN COMPILED, IN PART, FROM RECORD MAPPING AND OTHER DATA SUPPLIED BY RESPECTIVE UTILITY COMPANIES, GOVERNMENTAL AGENCIES AND/OR OTHER SOURCES. THESE LOCATIONS MUST BE CONSIDERED APPROXIMATE IN NATURE. ADDITIONALLY, OTHER SUCH FEATURES MAY EXIST ON THE SITE, THE EXISTENCE OF WHICH ARE UNKNOWN TO SLR INTERNATIONAL CORPORATION. THE EXISTENCE, SIZE AND LOCATION OF ALL SUCH FEATURES MUST BE DETERMINED AND VERIFIED IN THE FIELD BY THE APPROPRIATE AUTHORITIES PRIOR TO BEGINNING OF EXCAVATION AND/OR CONSTRUCTION.
CALL BEFORE YOU DIG DIAL 811 OR 1-800-922-4455.



- LEGEND**
- TREELINE
 - IRON FENCE
 - CHAIN LINK FENCE
 - CABLE LINE
 - ELECTRIC LINE
 - OVER HEAD WIRE
 - SANITARY MANHOLE
 - MANHOLE
 - CATCH BASIN
 - YARD DRAIN
 - BOLLARD
 - MONITOR WELL
 - WATER VALVE
 - GATE POST
 - POST
 - UTILITY POLE
 - GUY WIRE
 - HYDRANT
 - LIGHT POST
 - SIGN



SLR
 99 REALTY DRIVE
 SUITE 100
 20321171
 SLRCONSULTING.COM

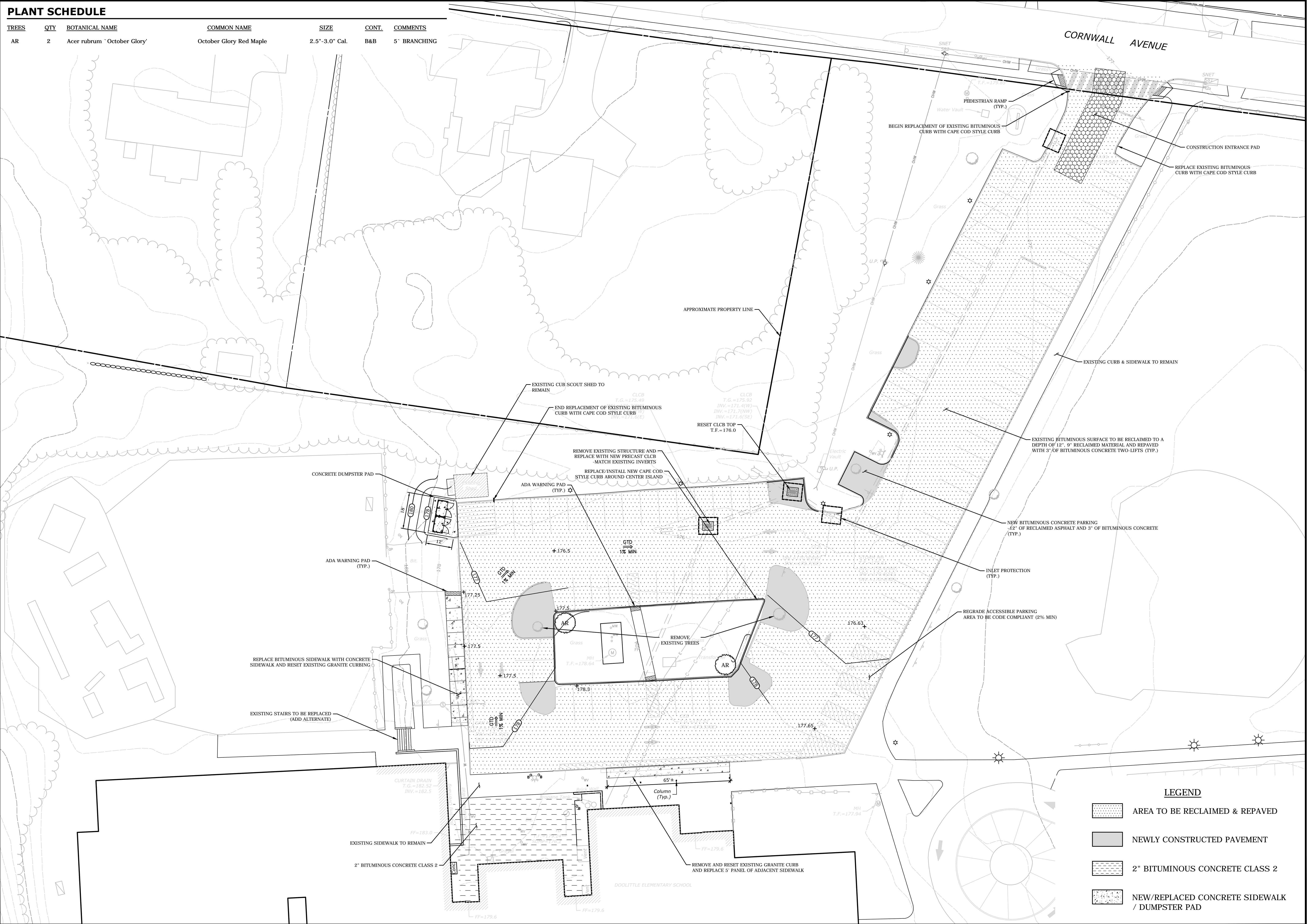
DESCRIPTION	DATE	BY

EXISTING CONDITIONS
 DOOLITTLE ELEMENTARY SCHOOL
 PARKING LOT REDESIGN
 735 CORNWALL AVENUE
 CHESHIRE, CONNECTICUT

DESIGNED	KJG	RJM
DRAWN		
CHECKED		
SCALE	1"=20'	
DATE	MAY 23, 2022	
PROJECT NO.	15410.00007	
SHEET NO.	02 OF 07	
SHEET NAME	EX	

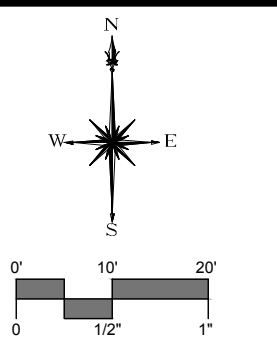
PLANT SCHEDULE

TREES	QTY	BOTANICAL NAME	COMMON NAME	SIZE	CONT.	COMMENTS
AR	2	Acer rubrum 'October Glory'	October Glory Red Maple	2.5"-3.0" Cal.	B&B	5' BRANCHING



LEGEND

	AREA TO BE RECLAIMED & REPAVED
	NEWLY CONSTRUCTED PAVEMENT
	2" BITUMINOUS CONCRETE CLASS 2
	NEW/REPLACED CONCRETE SIDEWALK / DUMPSTER PAD

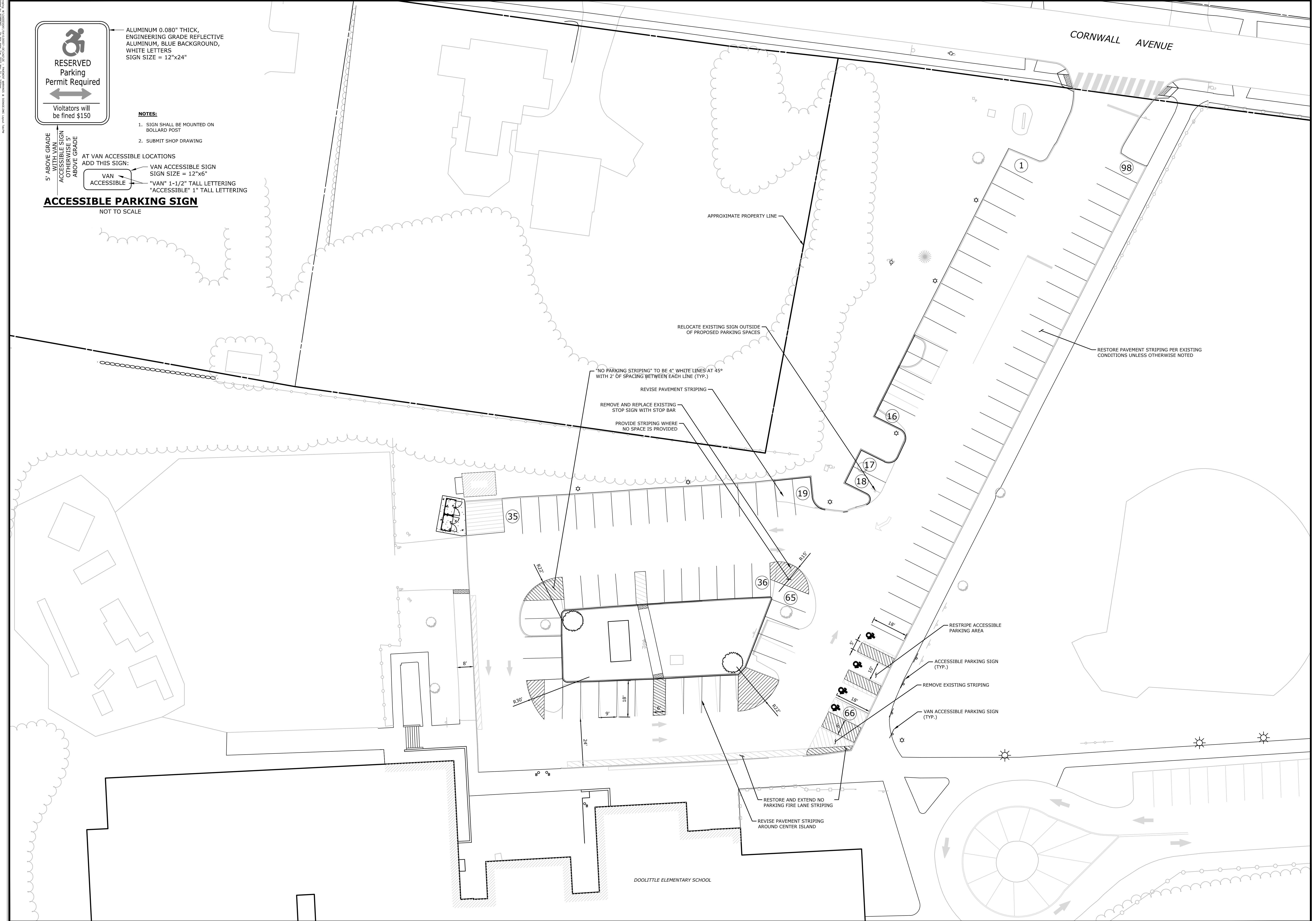


DESCRIPTION	DATE	BY

SITE PLAN - PARKING LOT REHABILITATION
DOOLITTLE ELEMENTARY SCHOOL
 735 CORNWALL AVENUE
 CHESHIRE, CONNECTICUT

KJG	KJG	RJM
DESIGNED	DRAWN	CHECKED
SCALE: 1"=20'		
DATE: MAY 23, 2022		
PROJECT NO.: 15410.00007		
SHEET NO.: 03 OF 07		

SP



ALUMINUM 0.080" THICK,
ENGINEERING GRADE REFLECTIVE
ALUMINUM, BLUE BACKGROUND,
WHITE LETTERS
SIGN SIZE = 12"x24"

NOTES:

1. SIGN SHALL BE MOUNTED ON BOLLARD POST
2. SUBMIT SHOP DRAWING

5' ABOVE GRADE WITH VAN ACCESSIBLE SIGN OTHERWISE 5' ABOVE GRADE

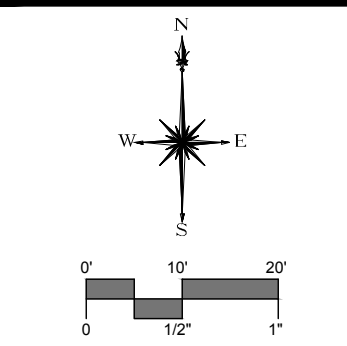
AT VAN ACCESSIBLE LOCATIONS ADD THIS SIGN:



VAN ACCESSIBLE SIGN SIGN SIZE = 12"x6"
"VAN" 1-1/2" TALL LETTERING
"ACCESSIBLE" 1" TALL LETTERING

ACCESSIBLE PARKING SIGN

NOT TO SCALE

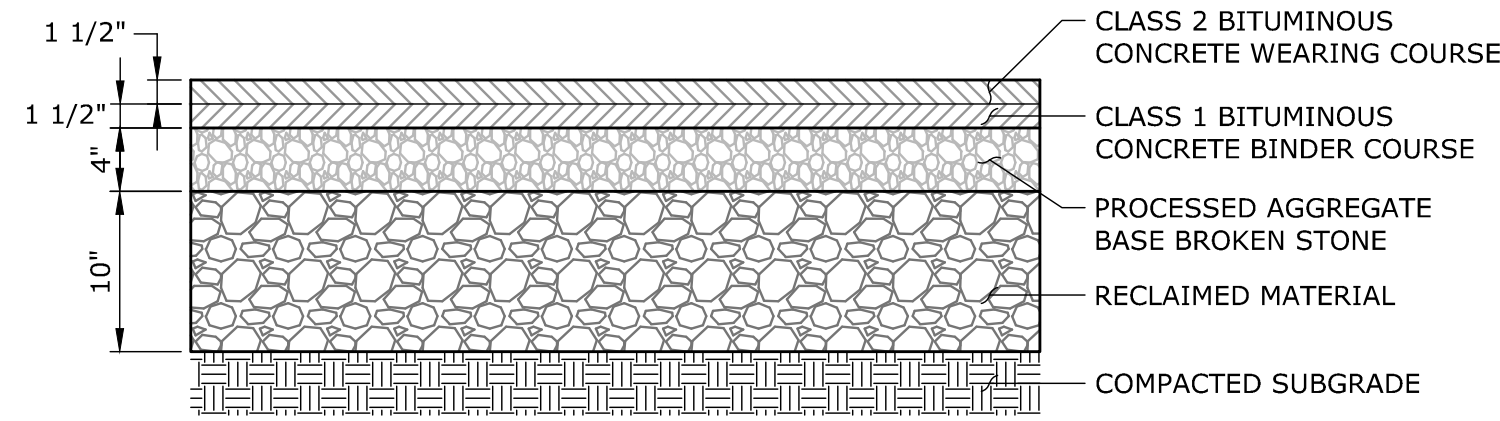


DESCRIPTION	DATE	BY

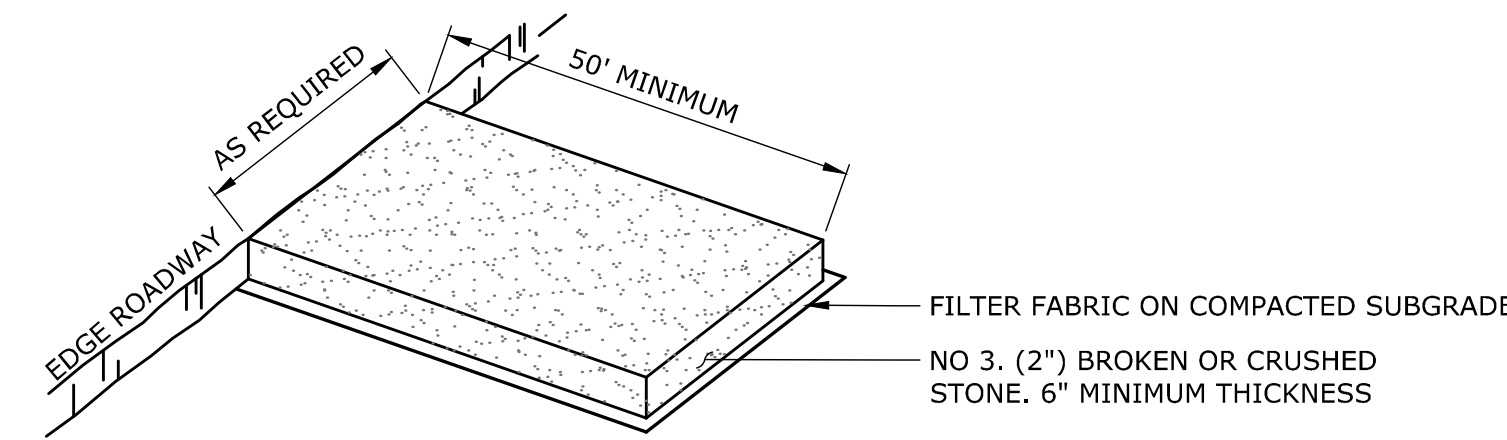
PAVEMENT MARKINGS AND SIGNAGE PLAN
DOOLITTLE ELEMENTARY SCHOOL
735 CORNWALL AVENUE
CHESHIRE, CONNECTICUT

DESIGNED	KJG	KJG	RJM
DRAWN			
CHECKED			
SCALE	1"=20'		
DATE	MAY 23, 2022		
PROJECT NO.	15410.00007		
SHEET NO.	04 OF 07		

PM

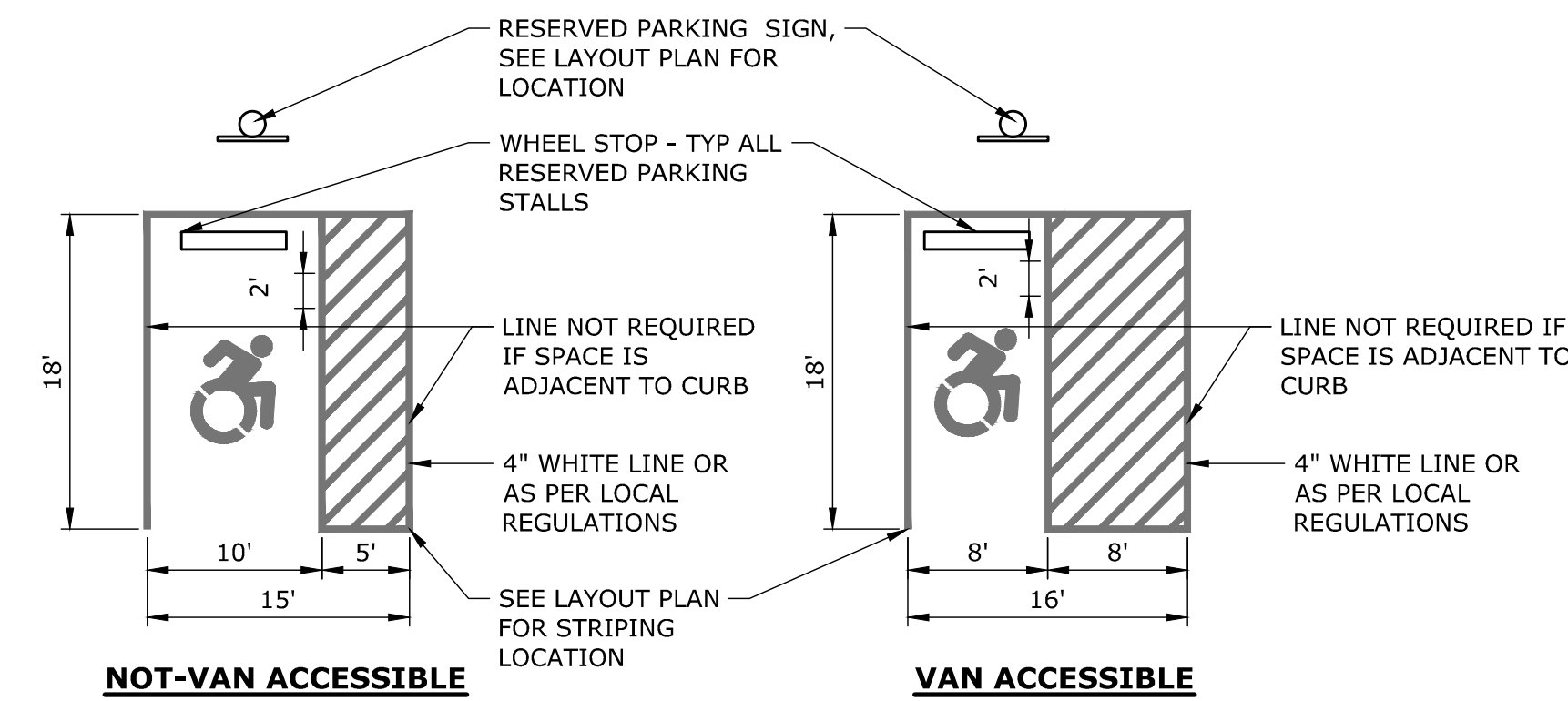


BITUMINOUS CONCRETE PAVEMENT
NOT TO SCALE

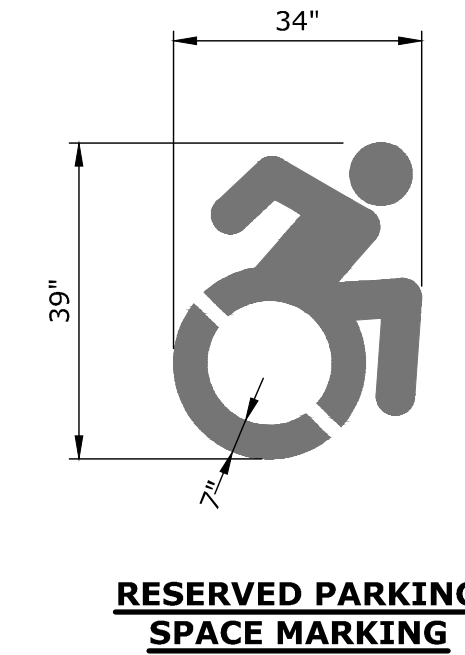


- NOTES:**
- CONSTRUCTION ENTRANCE PAD SHALL BE INSTALLED AND MAINTAINED DURING OPERATIONS WHICH GENERATE VEHICULAR TRACKING OF MUD.

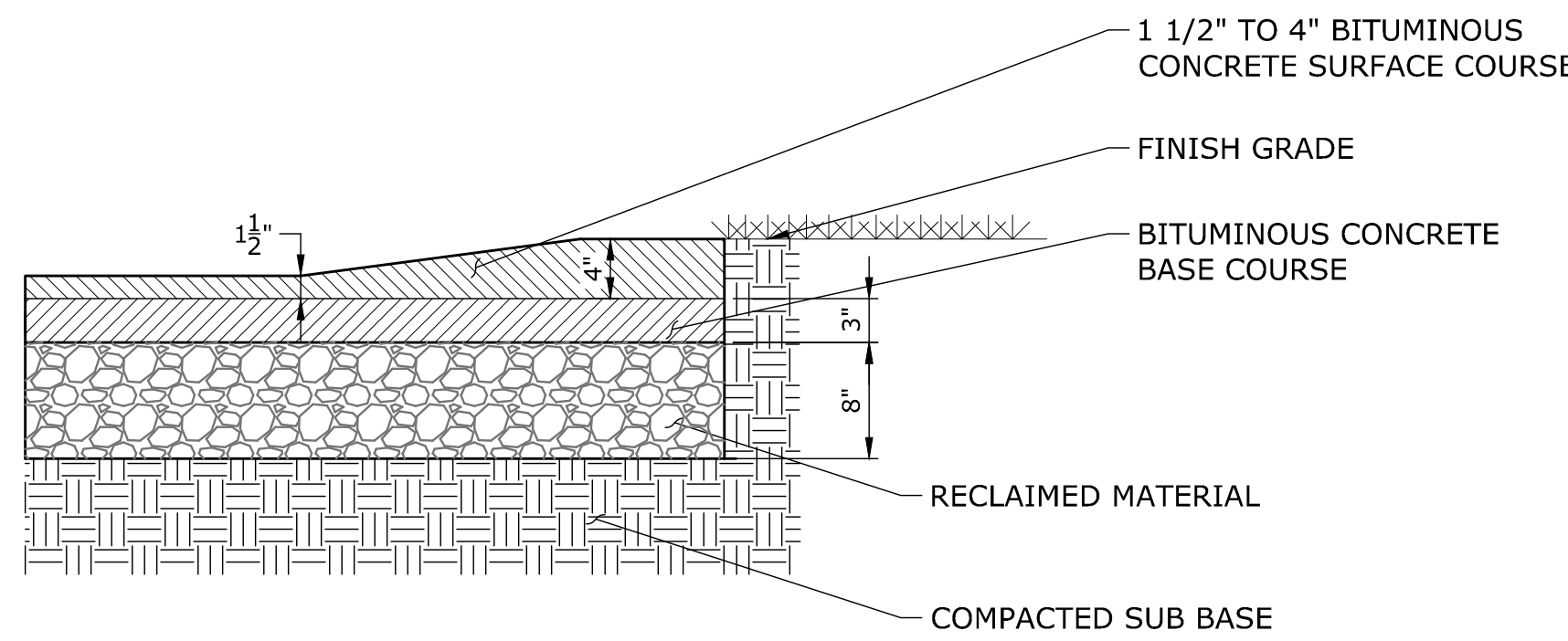
CONSTRUCTION ENTRANCE PAD
NOT TO SCALE



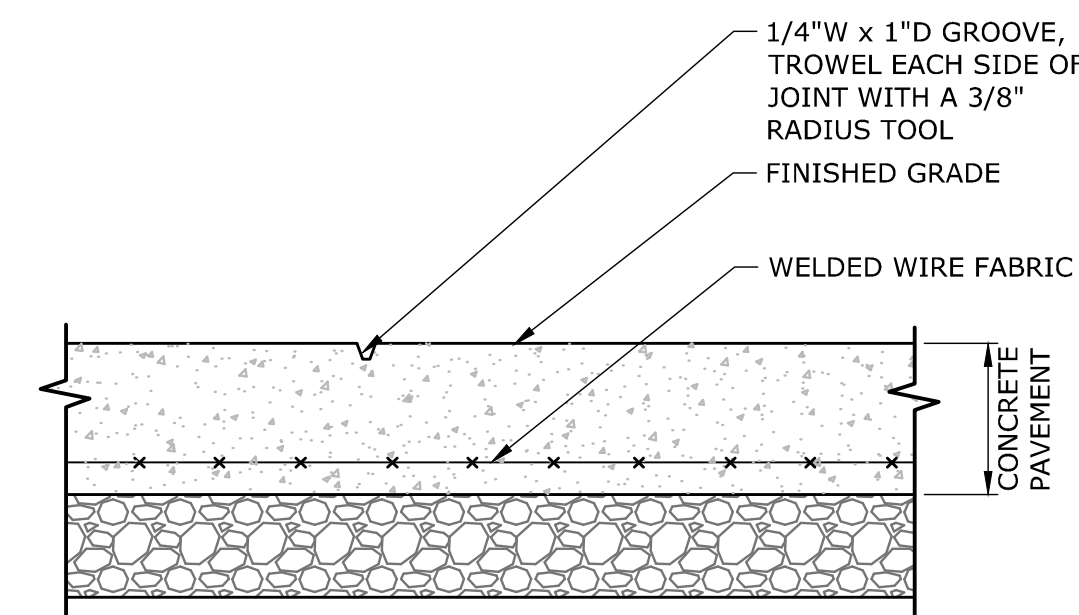
ACCESSIBLE PARKING STALL DETAIL
NOT TO SCALE



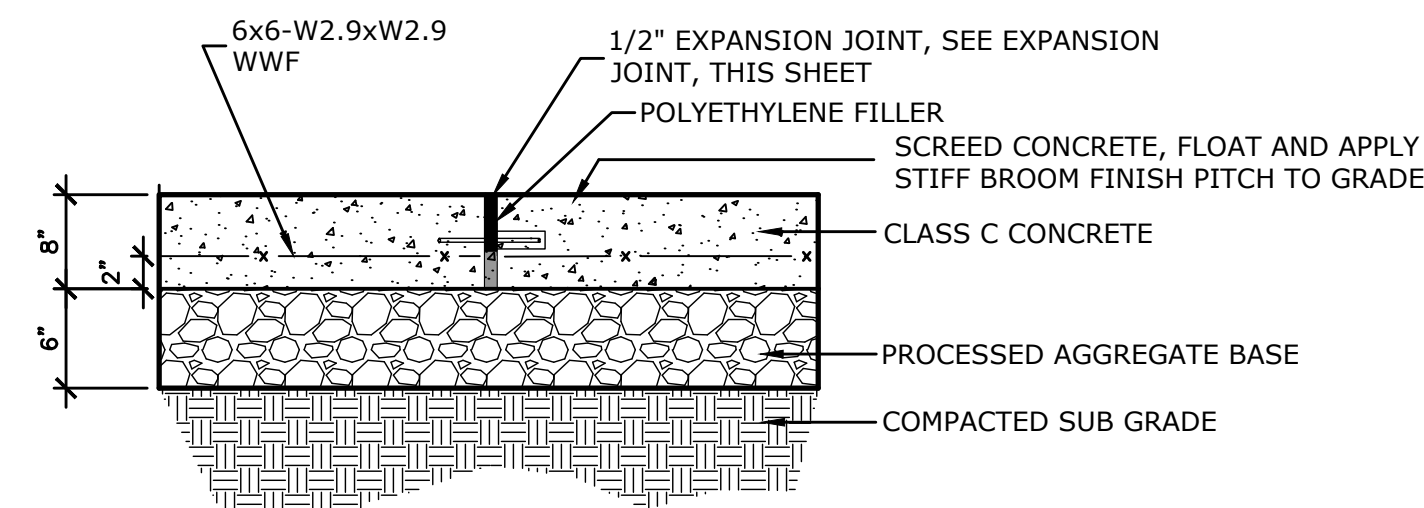
RESERVED PARKING SPACE MARKING



BITUMINOUS CONCRETE "CAPE COD" CURBING
NOT TO SCALE

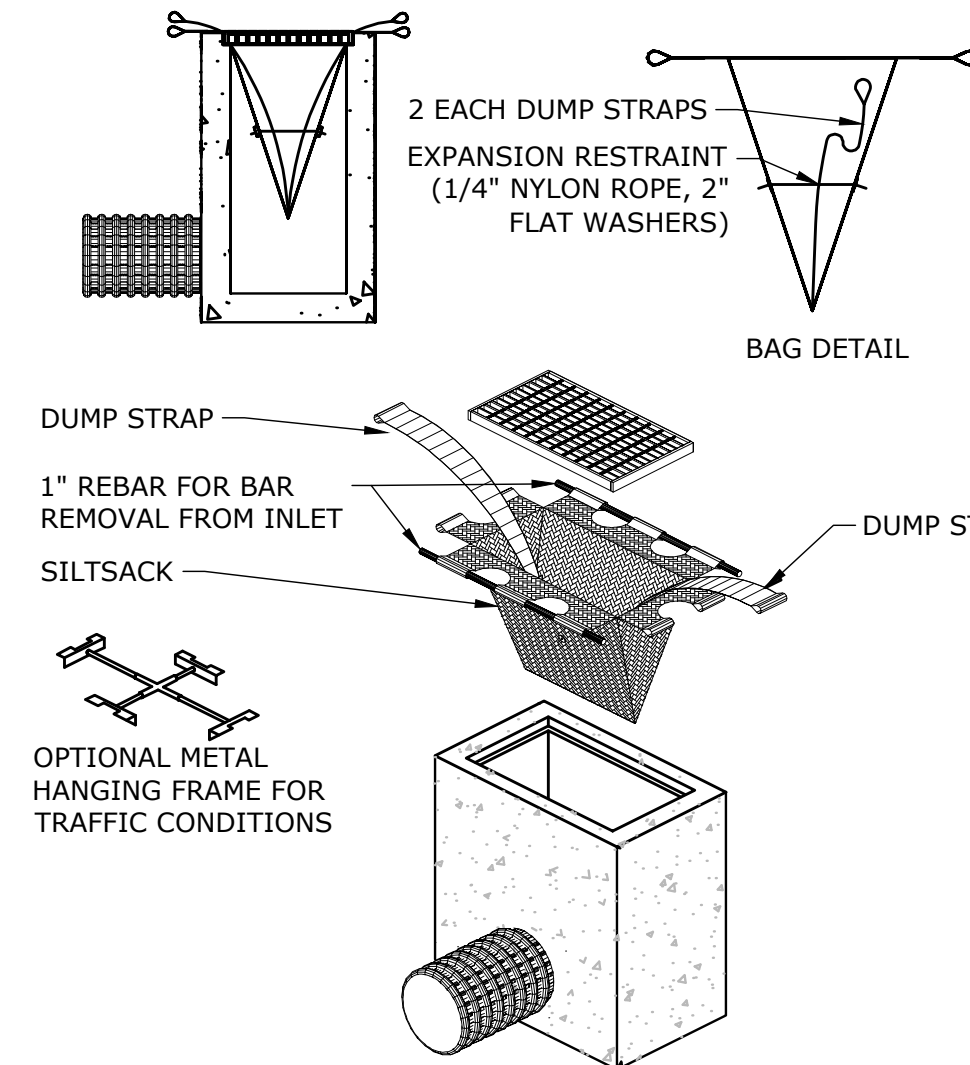


SCORE JOINT
NOT TO SCALE

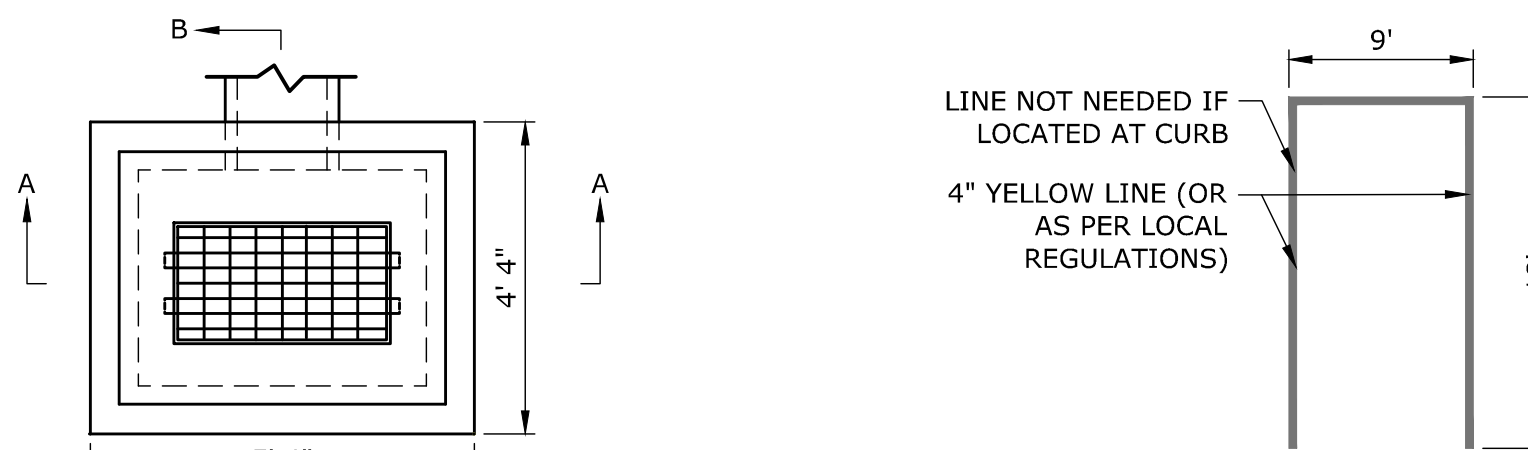


- NOTES:**
- EXP. JOINTS 20' O.C. MAX.
 - CONCRETE BASE SHALL BE SCREED, FLOATED, WITH STIFF BROOM FINISH AND PITCHED TO GRADE.

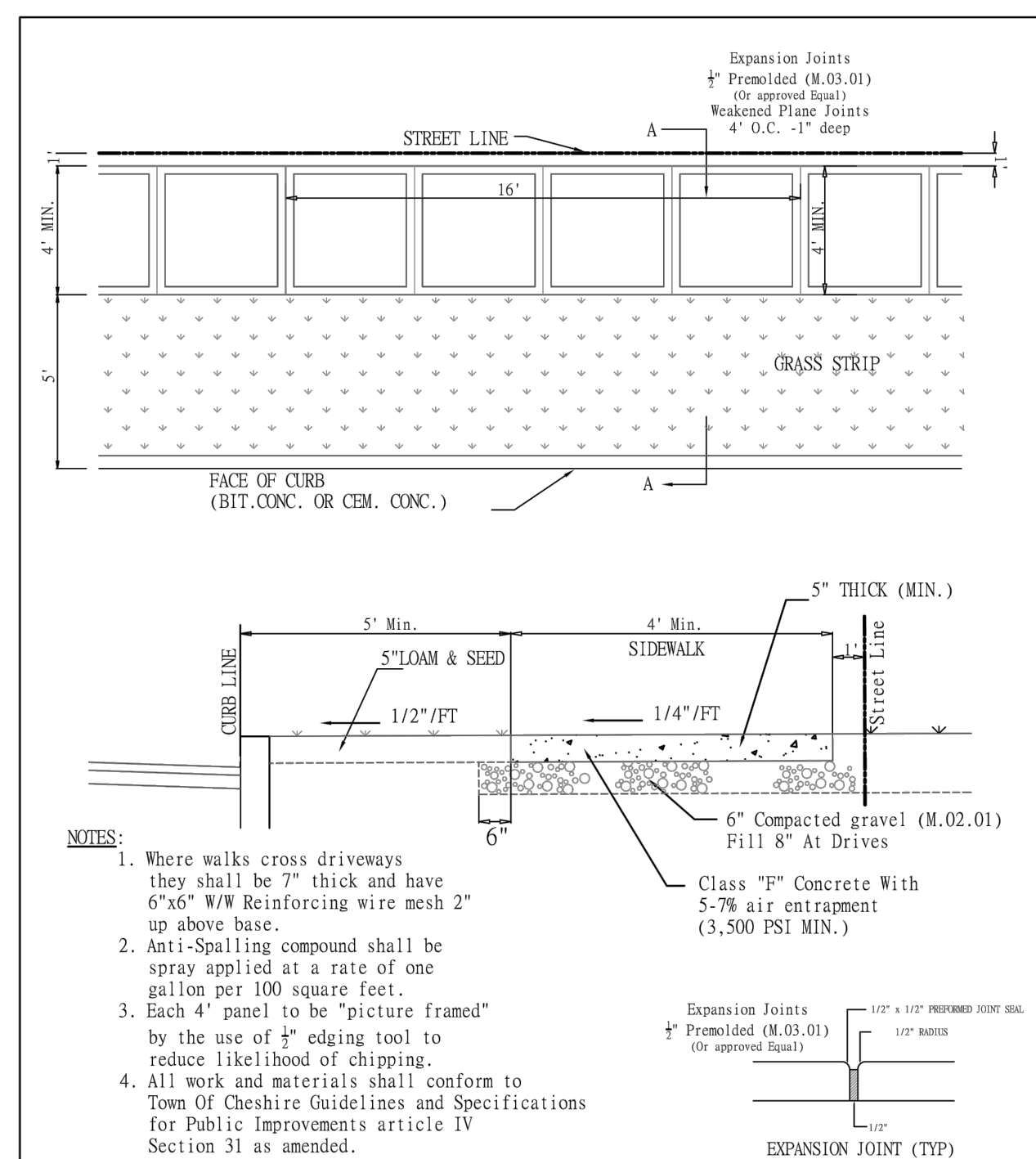
CONCRETE DUMPSTER PAD
NOT TO SCALE



TEMPORARY INLET PROTECTION
NOT TO SCALE

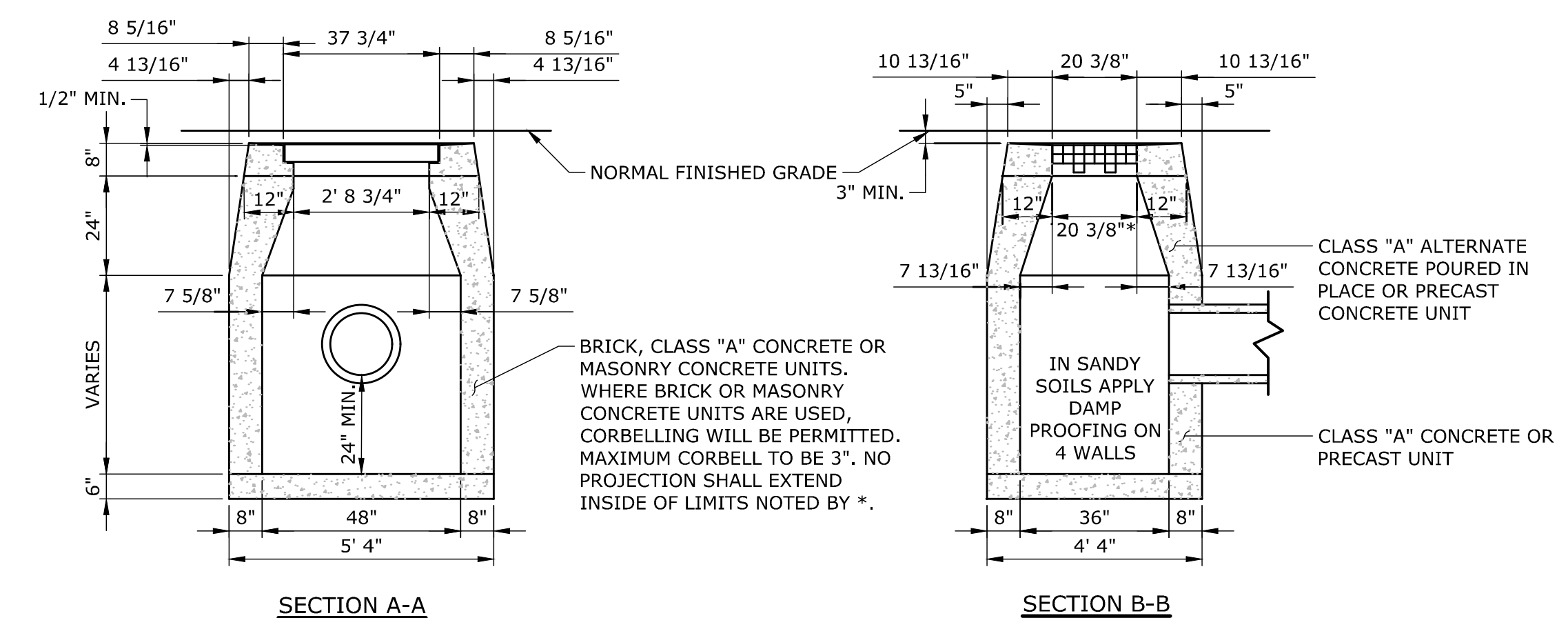


PARKING SPACE
NOT TO SCALE



- NOTES:**
- MAXIMUM SLOPES OF ADJOINING GUTTERS AND ROAD SURFACES IMMEDIATELY ADJACENT TO THE SIDEWALK RAMP OR ACCESSIBLE ROUTE SHOULD NOT EXCEED 20:1.
 - CARE SHALL BE TAKEN TO ASSURE UNIFORM GRADE ON THE RAMP, FREE OF SAGS AND ABRUPT GRADE CHANGES.
 - ALL RAMP SHALL BE CONSTRUCTED OF CLASS "C" CONCRETE IN ACCORDANCE WITH CONNECTICUT STANDARD SPECIFICATIONS ARTICLE M.03.01.
 - SIDEWALK RAMP SHALL HAVE A COARSE BROOM FINISH TRANSVERSE TO THE SLOPE OF THE RAMP. THE SURFACE ALONG ACCESSIBLE ROUTES SHALL BE STABLE, FIRM AND SLIP RESISTANT IN COMPLIANCE WITH ADAAG SECTION 4.5.
 - DIAGONAL SIDEWALK RAMP AT MARKED CROSSINGS SHALL BE WHOLLY CONTAINED WITHIN THE MARKINGS, EXCLUDING ANY FLARED SIDES.
 - REMOVAL OF EXISTING SIDEWALK FOR NEW RAMP INSTALLATIONS SHALL BE TO THE NEAREST EXPANSION/CONTRACTION JOINT OR DUMMY JOINT. 12:1 MAY NOT BE ACHIEVED DUE TO SIDEWALK GRADE. IN RECOGNITION OF THIS, A MINIMUM LIMIT OF 15' FOR A PARALLEL RAMP SHALL BE USED. REMOVAL SHALL NOT BE FURTHER THAN 2' FROM THE PROPOSED RAMP UNLESS DIRECTED BY THE ENGINEER. SAW CUT REQUIRED FOR DUMMY JOINTS SHALL BE INCLUDED IN THE COST OF "CONCRETE SIDEWALK".
 - EXPANSION JOINTS IN CONCRETE SHALL MATCH THOSE IN ADJACENT SIDEWALKS BUT IN NO CASE SHALL THE SPACING BETWEEN EXPANSION JOINTS EXCEED 12' UNLESS OTHERWISE NOTED.
 - RAISED ISLANDS IN MARKED CROSSINGS SHALL HAVE SIDEWALK RAMP AT BOTH SIDES AND A LEVEL AREA AT LEAST 4' LONG BETWEEN THE RAMP. IF THIS CAN NOT BE ACHIEVED, THE RAISED ISLAND SHALL BE CUT THROUGH LEVEL WITH THE ROADWAY AS SHOWN ON THE PLANS OR AS DIRECTED BY THE ENGINEER.
 - SIDEWALK RAMP SHALL BE CONSTRUCTED AND PAID FOR UNDER THE ITEM "CONCRETE SIDEWALK", INCLUDING CURBING WITHIN THE LIMITS OF THE NEW SIDEWALK RAMP AND DETECTABLE WARNING STRIPS.
 - CURBING WITHIN THE LIMITS OF THE NEW SIDEWALK RAMP SHALL BE CONSTRUCTED IN CONFORMANCE WITH THE REQUIREMENTS OF FORM 814A SECTIONS 8.11 AND 8.13.
 - HANDICAP RAMP CONFORMING WITH CONNECTICUT GENERAL STATUTES, SEC. 7-118a, SHALL BE INCORPORATED IN ALL PROPOSED SIDEWALKS AT ALL STREET INTERSECTIONS, AND AT ALL OTHER LOCATIONS WHERE THE GRADE OF A DRIVEWAY OR OTHER FACILITY TAKES PRECEDENCE OVER THE GRADE OF THE PROPOSED SIDEWALK.
 - TRANSITION TO FULL HEIGHT CURB. INSTALL STONE CURBING IF ADJACENT CURBING IS STONE. INSTALL CONCRETE CURBING IF ADJACENT CURBING IS CONCRETE OR BITUMINOUS.
 - INSTALL THE EDGE OF THE DETECTABLE WARNING 6" FROM THE EDGE OF ROAD.
 - TO PERMIT WHEELCHAIR WHEELS TO ROLL BETWEEN DOMES, ALIGN DOMES ON A SQUARE GRID, IN THE DIRECTION OF PEDESTRIAN TRAVEL.

DETECTABLE WARNING STRIP FOR ACCESSIBLE WALK
NOT TO SCALE



- NOTES:**
- WHERE PRECAST CONCRETE UNIT IS USED FOR SUMP, THE TOP OF THE UNIT SHALL BE AT LEAST 6" BELOW THE BOTTOM OF THE PIPE OUTLETTING FROM THE CATCH BASIN.

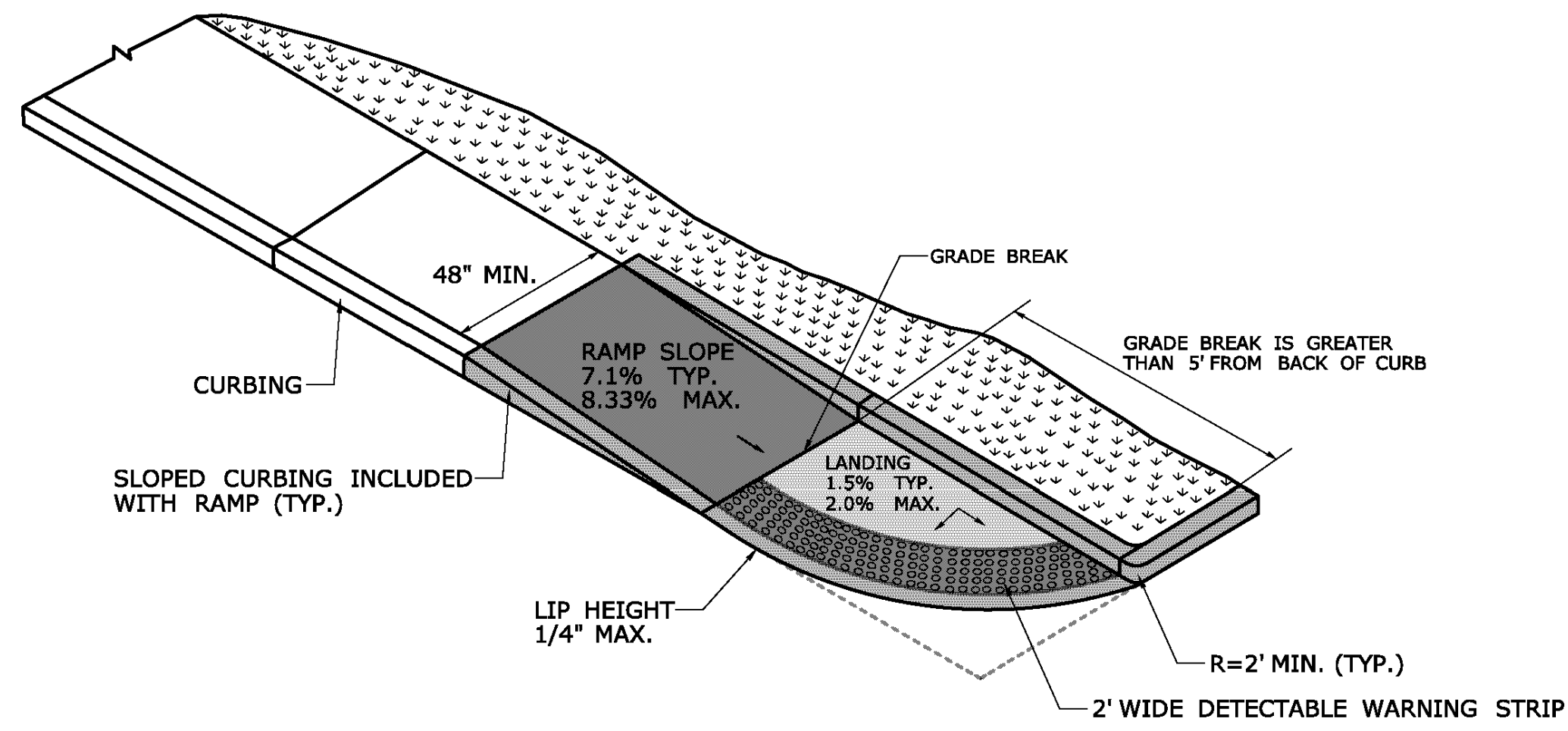
TYPE "C-L" CATCH BASIN
NOT TO SCALE

TOWN OF CHESHIRE	CEMENT CONCRETE SIDEWALK	SCALE: N.T.S.	DATE: 1/18	REVISION
Department Of Public Works And Engineering		DETAIL NO.	CAD FILE	FILE NO.
			APPENDIX A-	

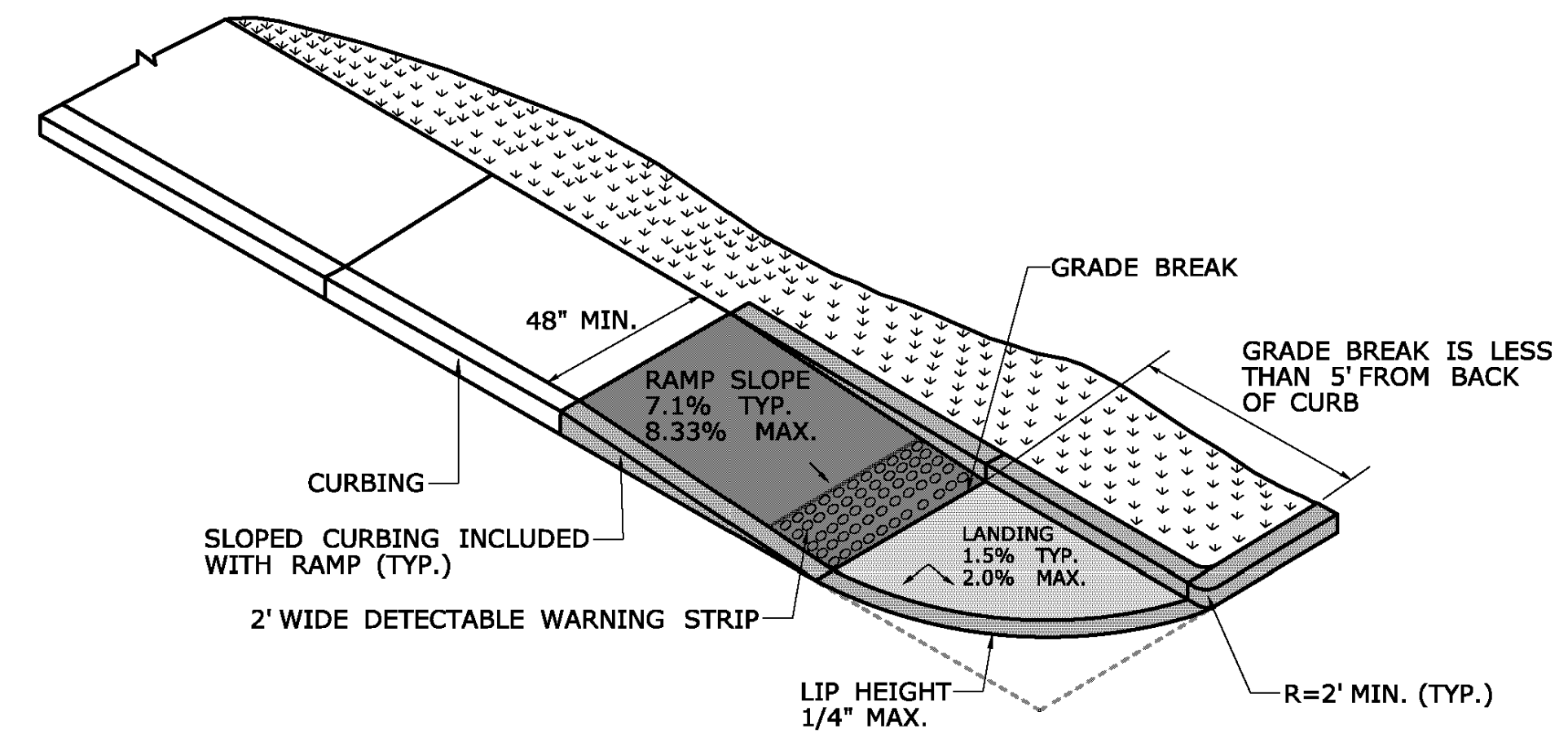
DESCRIPTION	DATE	BY

PD	KJG	RJM
DESIGNED	DRAWN	CHECKED
SCALE: NOT TO SCALE		
DATE:	MAY 23, 2022	
PROJECT NO.:	15410.00007	
SHEET NO.:	05 OF 07	
SD-1		

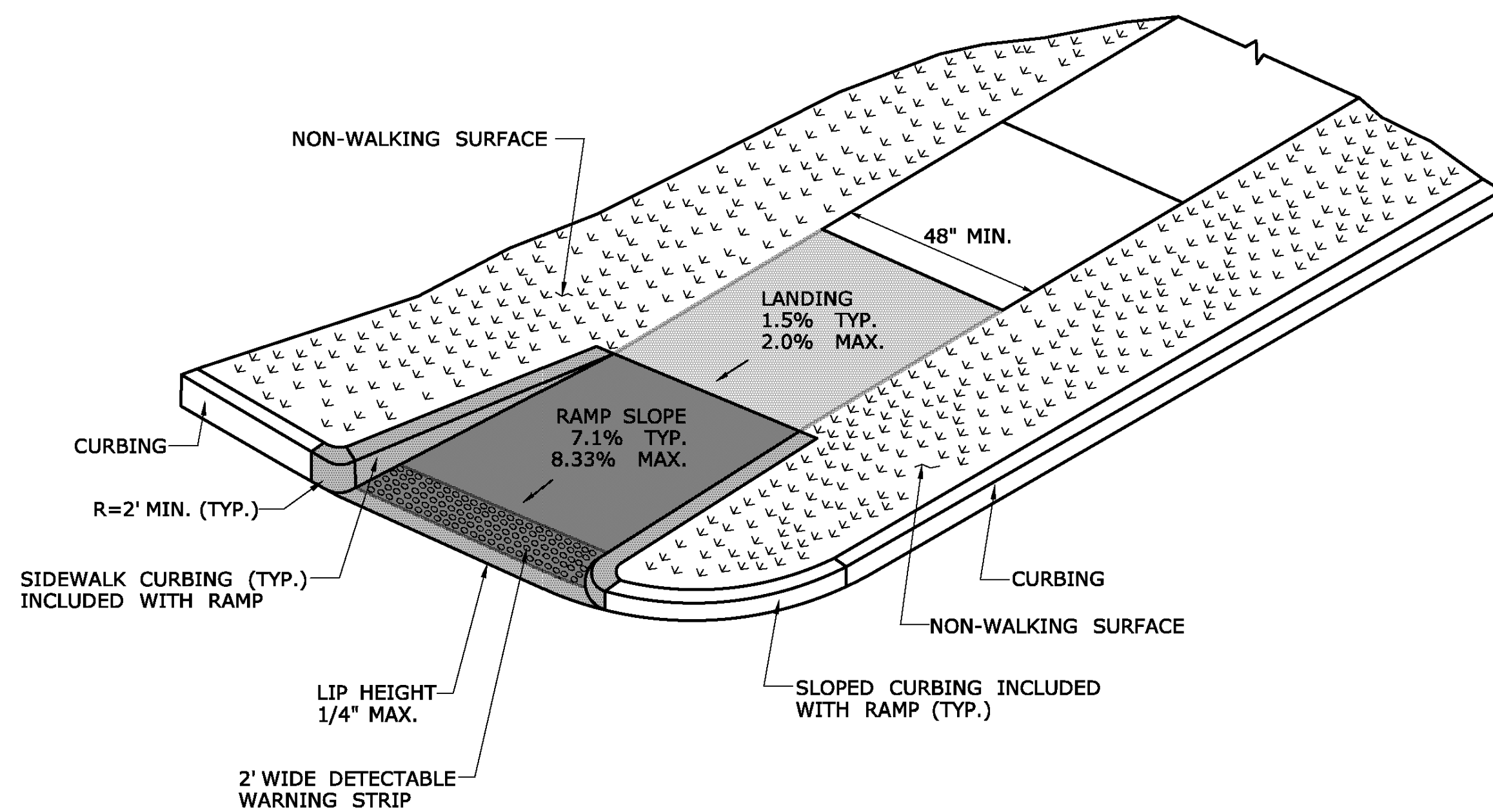
15410.00007.ctb
 1/16/2019 10:10:10 AM
 15410.00007.ctb
 1/16/2019 10:10:10 AM
 15410.00007.ctb



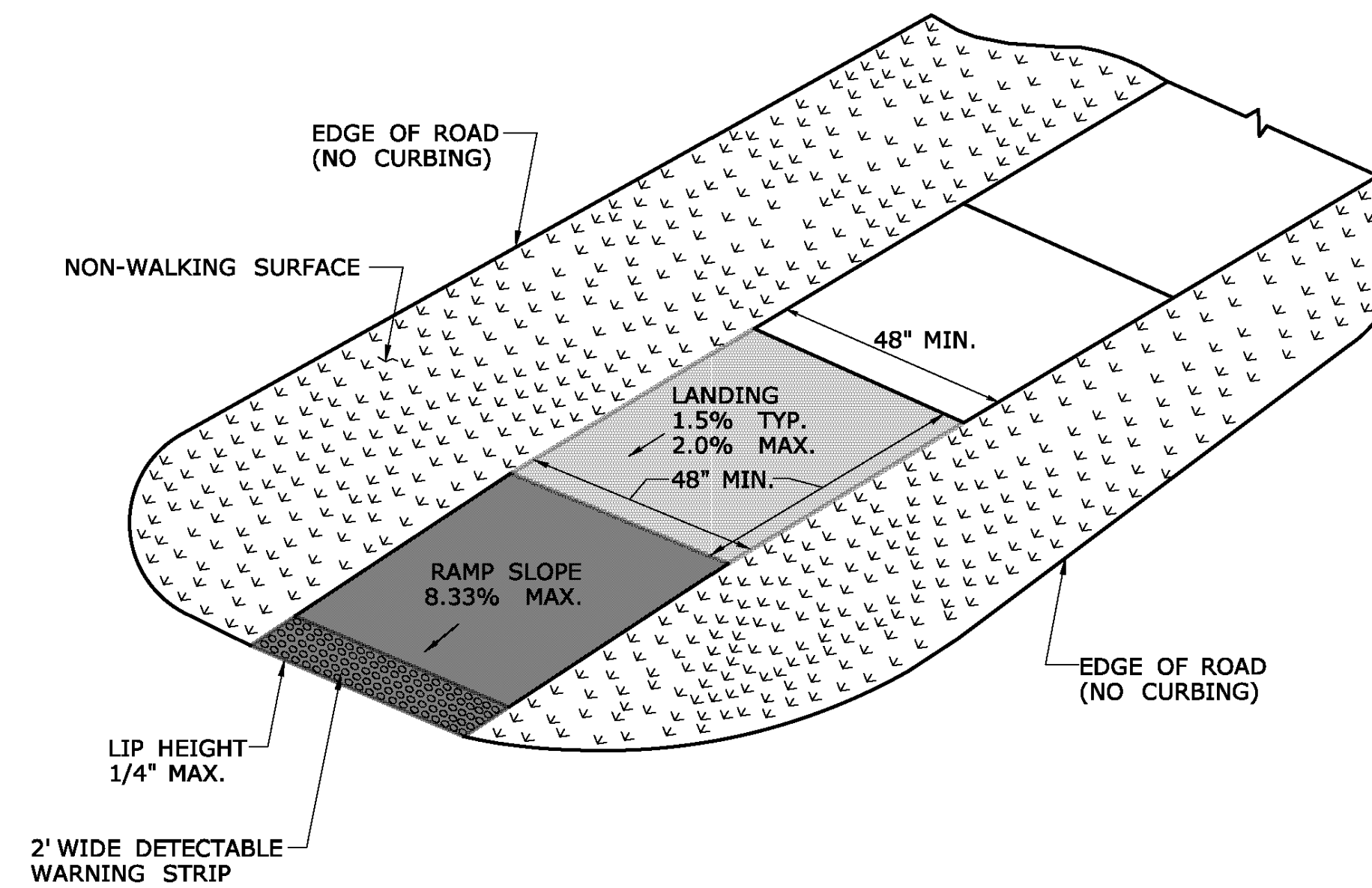
**SINGLE DIRECTION RAMP
WITHOUT NON-WALKING SURFACE
GRADE BREAK GREATER THAN 5'
(TYPE 14)**



**SINGLE DIRECTION RAMP
WITHOUT NON-WALKING SURFACE
GRADE BREAK LESS THAN 5'
(TYPE 15)**



**SINGLE DIRECTION - RETURN CURB
WITH NON-WALKING SURFACE
(TYPE 16)**



**SINGLE DIRECTION - NO CURB
WITH NON-WALKING SURFACE
(TYPE 17)**

DESIGN INITIATED CHANGE ORDER NO. Y - mm/dd/yy

DESIGNED	PD	KJG	RJM	CHECKED
NOT TO SCALE				
DATE: MAY 23, 2022				
PROJECT NO.: 15410.00007				
SHEET NO.: 06 OF 07				
THE INFORMATION, INCLUDING ESTIMATED QUANTITIES OF WORK, SHOWN ON THESE SHEETS IS BASED ON LIMITED INVESTIGATIONS BY THE STATE AND IS IN NO WAY WARRANTED TO INDICATE THE CONDITIONS OF ACTUAL QUANTITIES OF WORK WHICH WILL BE REQUIRED.		DESIGNER/DRAFTER: CHECKED BY:		PROJECT TITLE: TOWN: PROJECT NO.: DRAWING NO.: SHEET NO.:
STATE OF CONNECTICUT DEPARTMENT OF TRANSPORTATION		SIGNATURE/BLOCK: OFFICE OF ENGINEERING APPROVED BY:		DRAWING TITLE: CONCRETE SIDEWALK RAMP SHEETS 6
REV.	DATE	REVISION DESCRIPTION	SHEET NO.	Plotted Date: 1/30/2019



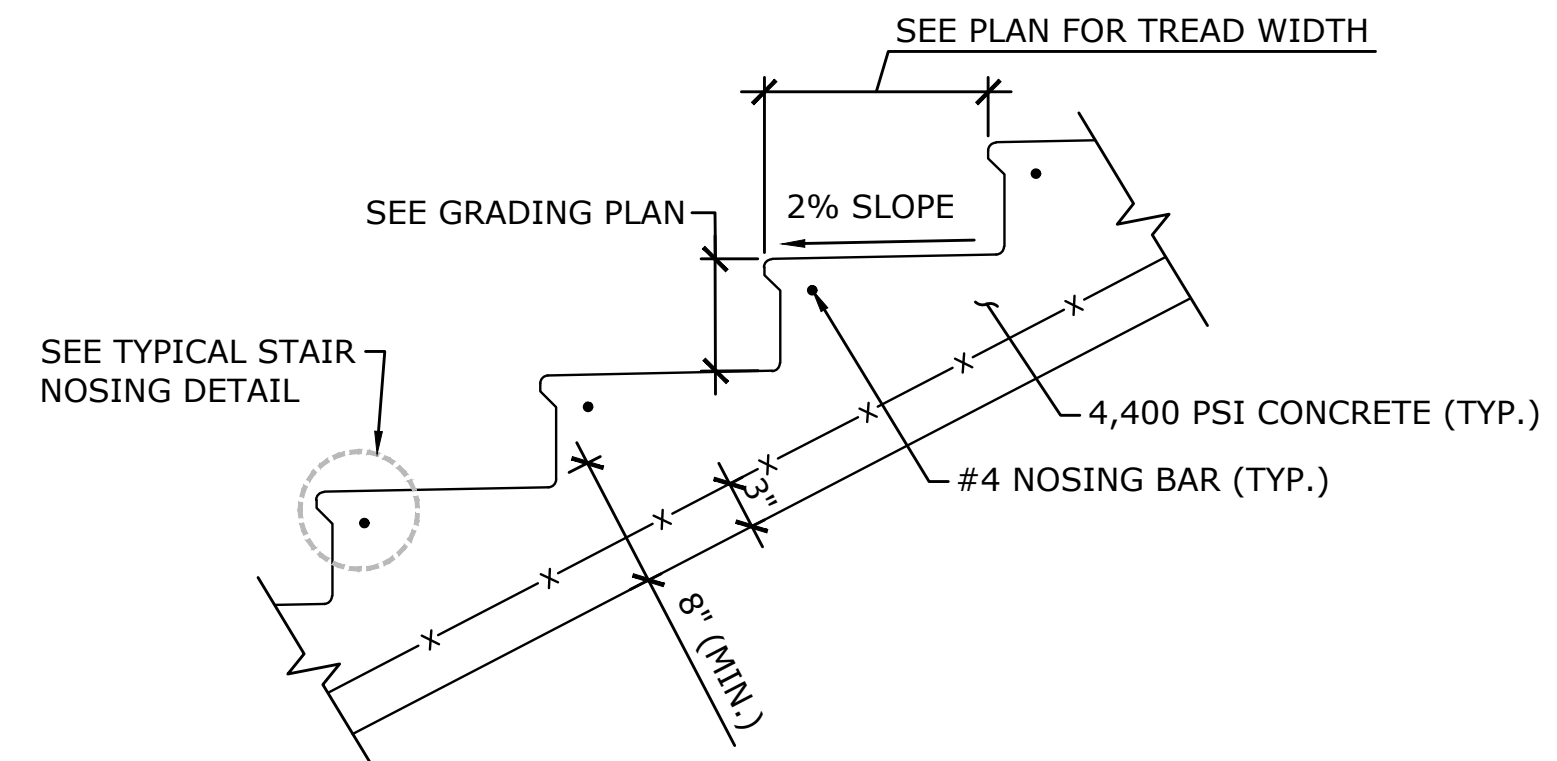
DESCRIPTION	DATE	BY

SITE DETAILS
 DOOLITTLE ELEMENTARY SCHOOL
 PARKING LOT REDESIGN
 735 CORNWALL AVENUE
 CHESHIRE, CONNECTICUT

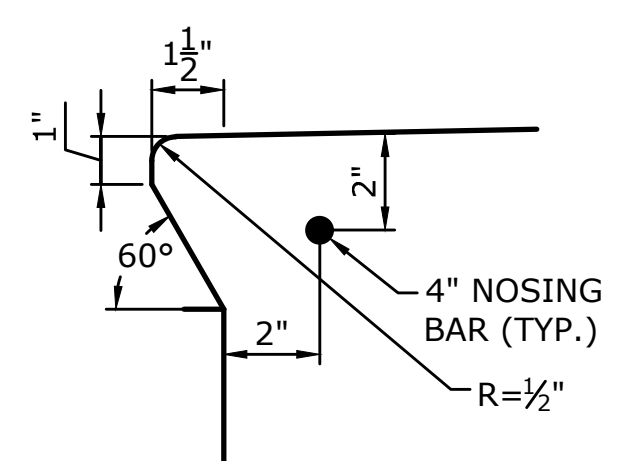
DESIGNED	PD	KJG	RJM	CHECKED
NOT TO SCALE				
DATE: MAY 23, 2022				
PROJECT NO.: 15410.00007				
SHEET NO.: 06 OF 07				

SD-2

CONSULT: SEE PLAN FOR TREAD WIDTH
 SEE GRADING PLAN
 SEE TYPICAL STAIR NOSING DETAIL
 SEE PLAN FOR TREAD WIDTH
 2% SLOPE
 4,400 PSI CONCRETE (TYP.)
 #4 NOSING BAR (TYP.)
 8" (MIN.)
TYPICAL CONCRETE STAIR DETAIL
 NOT TO SCALE

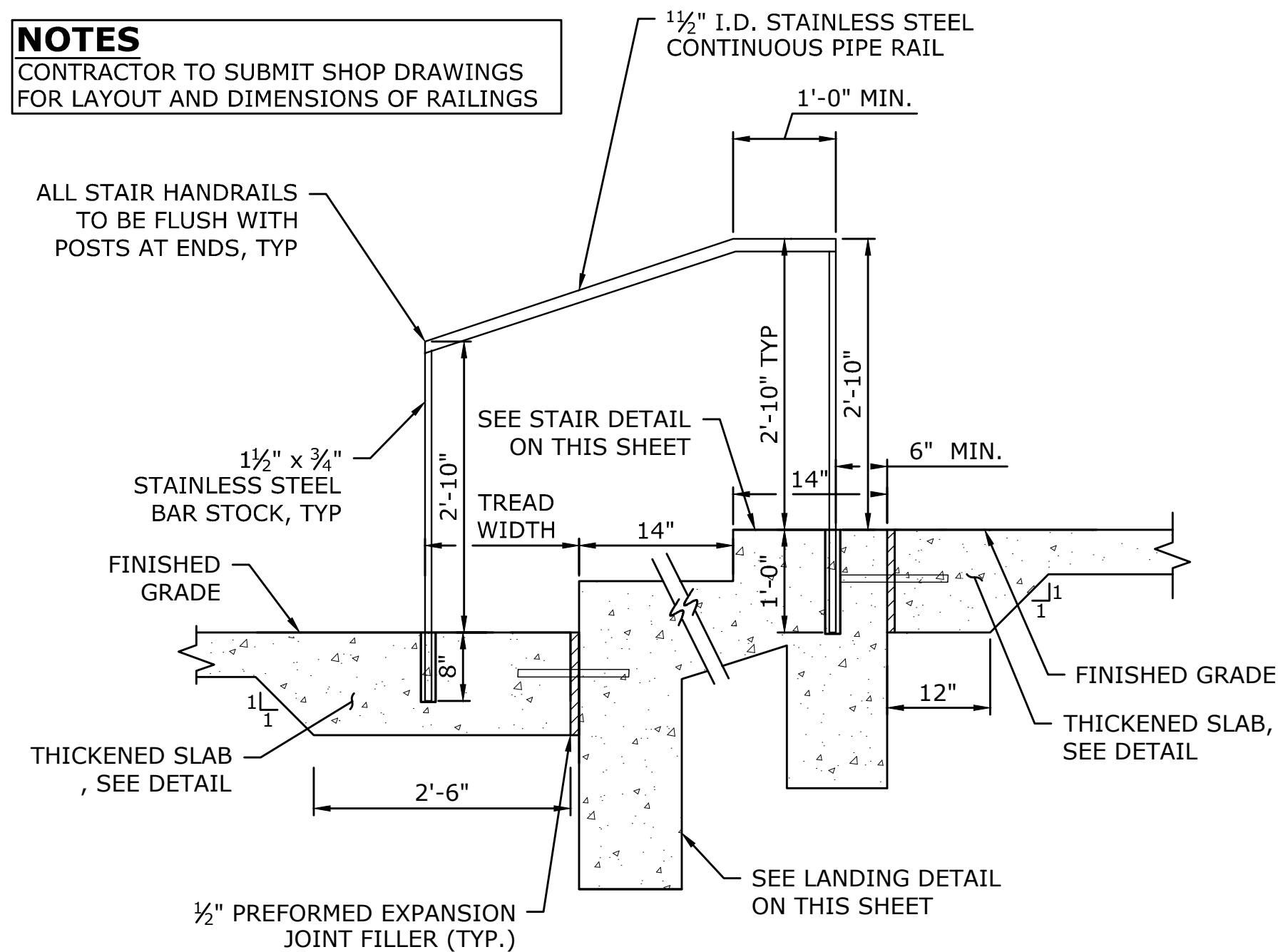


TYPICAL CONCRETE STAIR DETAIL
NOT TO SCALE

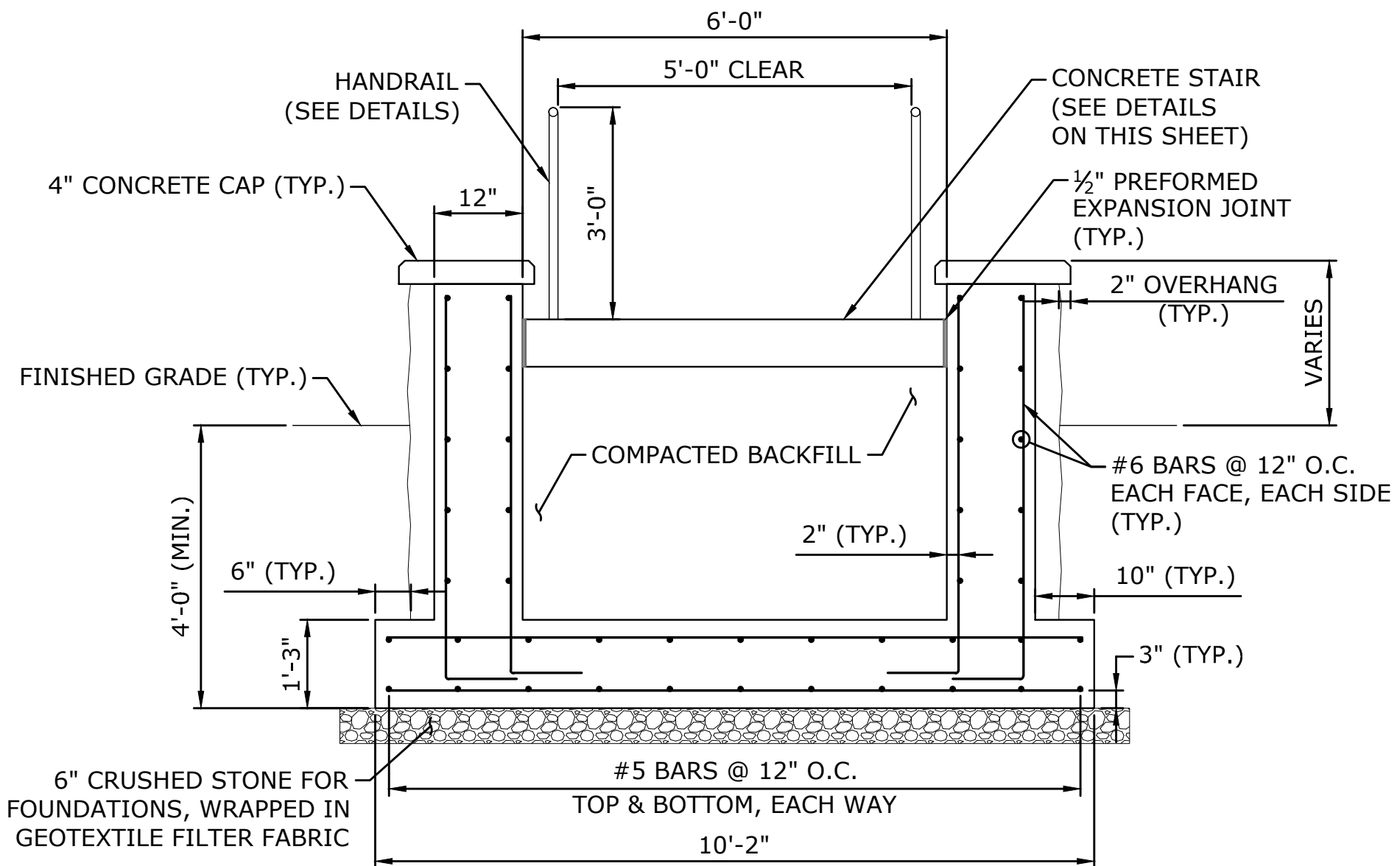


TYPICAL STAIR NOSING DETAIL
SCALE: 3"=1'-0"

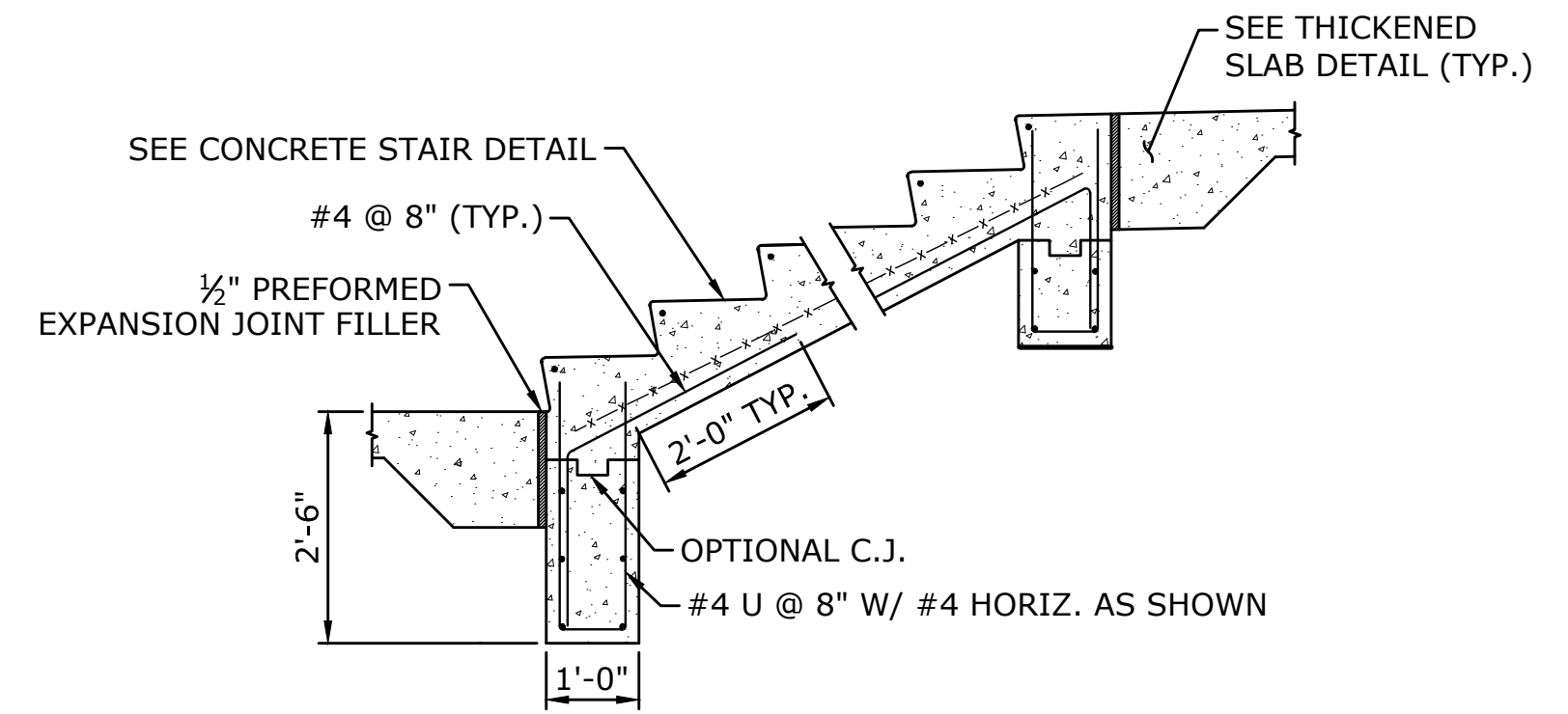
NOTES
 CONTRACTOR TO SUBMIT SHOP DRAWINGS FOR LAYOUT AND DIMENSIONS OF RAILINGS



TYPICAL STAIR HANDRAIL DETAIL



TYPICAL CONCRETE WALL - SECTION E
SCALE: 1/2"=1'-0"



STAIR TERMINATION DETAIL
SCALE: 1/2"=1'-0"

GENERAL NOTES

- ALLOWABLE DESIGN STRESSES:** CLASS "F" BASED ON $f_c = 4,400$ psi
- DIMENSIONS:** WHEN DECIMAL DIMENSIONS ARE GIVEN TO LESS THAN THREE DECIMAL PLACES, THE OMITTED DIGITS SHALL BE ASSUMED TO BE ZEROS.

CONCRETE NOTES

- CLASS "F" CONCRETE:** CLASS "F" CONCRETE SHALL BE USED FOR RETAINING WALL STEM & FOOTING.
- EXPOSED EDGES:** EXPOSED EDGES OF CONCRETE SHALL BE BEVELED 1"x1" UNLESS DIMENSIONED OTHERWISE.
- CONCRETE COVER:** ALL REINFORCEMENT SHALL HAVE TWO INCHES COVER UNLESS DIMENSIONED OTHERWISE.
- REINFORCEMENT:** ALL REINFORCEMENT SHALL BE ASTM A615 GRADE 60.
- CONSTRUCTION JOINTS:** CONSTRUCTION JOINTS, OTHER THAN THOSE SHOWN ON THE PLANS, WILL NOT BE PERMITTED WITHOUT THE PRIOR APPROVAL OF THE ENGINEER.



DESCRIPTION	DATE	BY

SITE DETAILS (ADD ALTERNATE)
 DOOLITTLE ELEMENTARY SCHOOL
 PARKING LOT REDESIGN
 735 CORNWALL AVENUE
 CHESHIRE, CONNECTICUT

NP	KJG	RJM
DESIGNED	DRAWN	CHECKED
NOT TO SCALE		
DATE		
MAY 23, 2022		
PROJECT NO.		
15410.00007		
SHEET NO.		
07 OF 07		

SD-3